

Tools Where You Need Them

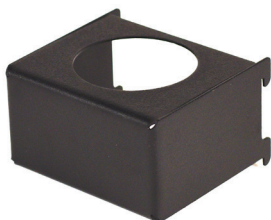
Flextur Mobile Tool Board Can Holders

The Flextur™ Can Holders provides a sturdy, reliable solution for storing larger aerosol cans, bottles and paint cans. Built from durable steel and designed to mount the holder to any Flextur 14-gauge metal pegboard or tool board, whether on a mobile cart, workstation, or wall-mounted system. You can nest them alongside other holders in a shared slot or mount it individually, offering maximum flexibility to match your layout and workflow.

Easily reposition the holders anytime to maintain an efficient, LEAN-friendly workspace.
American Made in Dalton, Ohio U.S.A.



2.75" Spray Can Holder



- **Capacity:** 10 lbs
- **Material:** Steel
- **Finish:** Powder Coated

Part Number: **73522416**

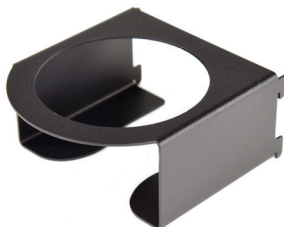
3.25" Spray Can Holder



- **Capacity:** 10 lbs
- **Material:** Steel
- **Finish:** Powder Coated

Part Number: **73522424**

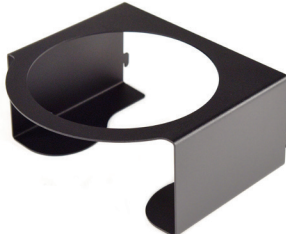
4.75" Paint Can Holder



- **Capacity:** 10 lbs
- **Material:** Steel
- **Finish:** Powder Coated

Part Number: **73522436**

7" Paint Can Holder



- **Capacity:** 25 lbs
- **Material:** Steel
- **Finish:** Powder Coated

Part Number: **73522446**