

Tools Where You Need Them

Flextur Mobile Tool Board Bins

The Flextur™ Bins deliver spacious, reliable storage for large parts, tools, and bulky materials. Constructed from durable steel, these bins are designed to integrate seamlessly with all Flextur 14-gauge metal pegboard and tool board systems, making them a powerful addition to your workstation, mobile tool board, or wall-mounted storage setup.

Providing maximum capacity while maintaining easy access and visibility. Mount the bins individually or nest them in a shared slot with other Flextur bins to create a customized storage layout that supports LEAN efficiency. You can reposition anytime to suit your evolving workflow and organization needs. American Made in Dalton, Ohio U.S.A.

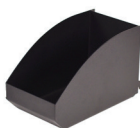
3" x 5" Bin



- **Capacity:** 25 lbs
- **Quantity:** 2 pack
- **Material:** Steel
- **Finish:** Powder Coated

Part Number: **73521912**

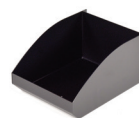
4" x 8" Bin



- **Capacity:** 25 lbs
- **Quantity:** 2 pack
- **Material:** Steel
- **Finish:** Powder Coated

Part Number: **73521919**

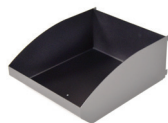
7" x 10" Bin



- **Capacity:** 40 lbs
- **Quantity:** 2 pack
- **Material:** Steel
- **Finish:** Powder Coated

Part Number: **73521927**

10" x 12" Bin



- **Capacity:** 100 lbs
- **Quantity:** 2 pack
- **Material:** Steel
- **Finish:** Powder Coated

Part Number: **73521933**

30" x 10" Bin



- **Capacity:** 200 lbs
- **Quantity:** 2 pack
- **Material:** Steel
- **Finish:** Powder Coated

Part Number: **73521945**

30" x 15" Bin



- **Capacity:** 200 lbs
- **Quantity:** 2 pack
- **Material:** Steel
- **Finish:** Powder Coated

Part Number: **73521952**