

Tools Where You Need Them

Flextur Mobile Tool Board Shelves

The Flextur™ Shelves deliver dependable, heavy-duty storage for a variety of tools, parts, and supplies. Built from high-quality steel, these shelves integrate seamlessly with Flextur's 14-gauge metal pegboard and tool board systems, providing the durability needed for industrial environments.

They expand surface space to support larger or heavier items, helping keep your workspace organized and efficient. Easily moved or repositioned as your workflow evolves, the shelves adapt to your needs while maintaining a clean, LEAN work environment. American Made in Dalton, Ohio U.S.A.

30" x 10" Shelf



- **Dimensions:** 10"L x 30"W x 7"H
- **Capacity:** 250 lbs
- **Weight:** 22 lbs
- **Material:** Steel
- **Finish:** Powder Coated
- **Quantity:** 2 pack

Part Number: **73529211**

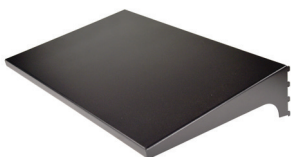
30" x 15" Shelf



- **Dimensions:** 15"L x 30"W x 7"H
- **Capacity:** 200 lbs
- **Weight:** 30 lbs
- **Material:** Steel
- **Finish:** Powder Coated
- **Quantity:** 2 pack

Part Number: **73529216**

30" x 20" Shelf



- **Dimensions:** 20"L x 30"W x 7"H
- **Capacity:** 200 lbs
- **Weight:** 37 lbs
- **Material:** Steel
- **Finish:** Powder Coated
- **Quantity:** 2 pack

Part Number: **73529223**

1.5" x 15 Shelf Spacer



- **Dimensions:** 15"L x 1.5" W x 7" H
- **Capacity:** 100 lbs
- **Weight:** 8 lbs
- **Material:** Steel
- **Finish:** Powder Coated
- **Quantity:** 4 pack

Part Number: **73528815**