

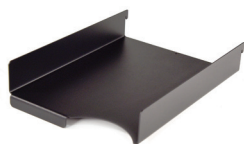
Documents, Clean & Organized

Flextur Paper Trays

The Flextur™ Paper Trays are robust, modular trays designed to keep your workspace organized and efficient. Constructed from heavy-duty steel, these trays accommodate standard 8.5" x 11" sheets, making them ideal for work orders, job travelers, safety data sheets, or printed instructions.

Multiple trays can be stacked or lined up side-by-side for a customized organizational system. They integrate seamlessly with all Flextur 16-gauge metal pegboard and tool board systems, including workstations, mobile carts, and wall panels. American Made in Dalton, Ohio U.S.A

Inbox Paper Tray



- **Dimensions:** 9"L x 11"W x 2"H
- **Weight:** 10 lbs
- **Capacity:** 25 lbs
- **Quantity:** 4
- **Material:** 16 Gauge Steel
- **Finish:** Powder Coated

Part Number: **73529815**

Upright Paper Tray



- **Dimensions:** 11.25"L x 9.5"W x 0.5"H
- **Weight:** 8 lbs
- **Capacity:** 10 lbs
- **Quantity:** 4
- **Material:** 16 Gauge Steel
- **Finish:** Powder Coated

Part Number: **73529805**

Horizontal Paper Tray



- **Dimensions:** 11.25" L x 9"W x 6"H
- **Weight:** 8 lbs
- **Capacity:** 25 lbs
- **Quantity:** 2
- **Material:** 16 Gauge Steel
- **Finish:** Powder Coated

Part Number: **73529818**

Horizontal Paper Tray



- **Dimensions:** 11.25"L x 9"W x 12"H
- **Weight:** 11 lbs
- **Capacity:** 25 lbs
- **Quantity:** 2
- **Material:** 16 Gauge Steel
- **Finish:** Powder Coated

Part Number: **73529823**